



**SONCEBOZ**



**▶ Compact Power BLDC CPM90**

**5924 – 24V**

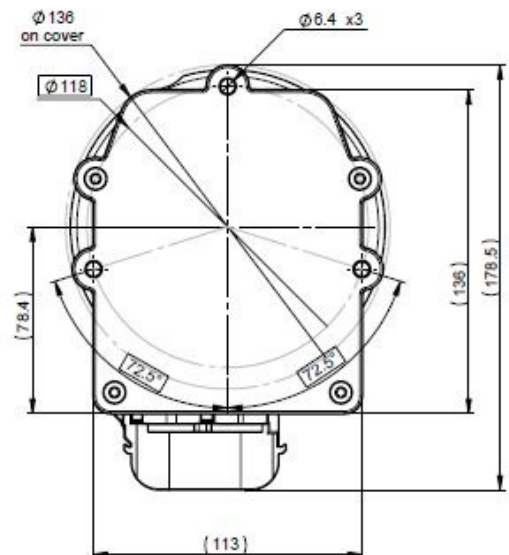
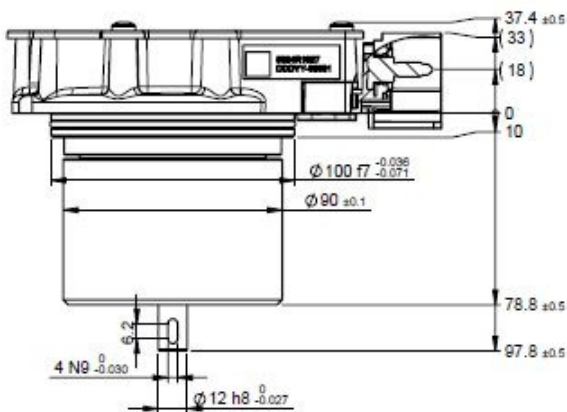
Peak power.....	2.1 kW
Max. Torque.....	up to 10.5 Nm
Max. speed.....	up to 5000 rpm
Communication.....	CAN
Weight.....	3.4 kg

The compact power BLDC CPM90 comprises of a brushless, permanent-magnet synchro-motor as well as a fully integrated control unit. It is exhibiting a maximum efficiency -over 90%- for all low voltage applications.

**▶ Features & Benefits**

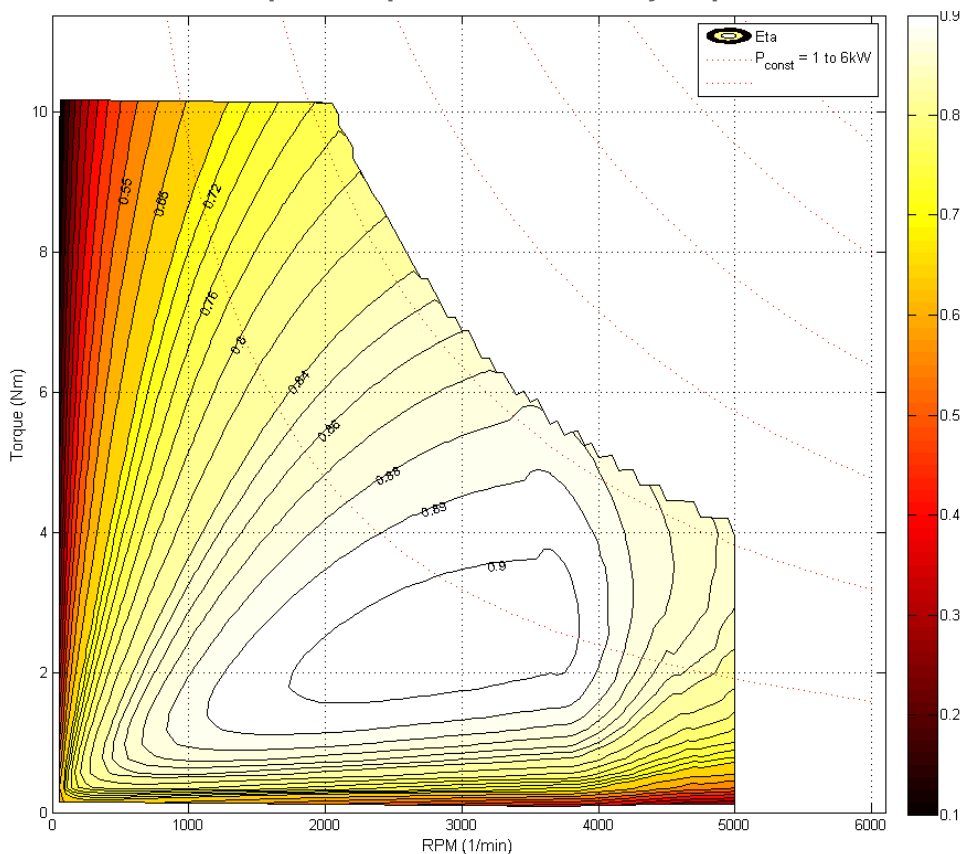
- Brushless DC motor with integrated CAN bus control electronics
- Torque up to 10.5 Nm peak
- Supply voltage range between 18V and 32V
- Protection index up to IP6k9k after integration to customer's housing
- Operating temperature from -40°C to 85°C
- Integrated connector
- Outstanding compactness
- Torque control/Speed control
- Power/Battery current control
- Energy recuperation / 4 quadrant operation
- Field oriented control
- Integrated failure diagnostics

**▶ Dimensions**



► Technical data

Torque vs. Speed and Efficiency Map



Motor's Reference	5924R1027	
Max Torque	10.5	Nm
Max speed	5000	rpm

► Electrical and Mechanical Interface

Integrated signal connector	Deutsch DT04-6P, Mating connector DT06-6S
Signal connector pinout	1=CAN Shield, 2=CAN low, 3=Wake-up, 4=CAN high, 5=Enable GND, 6=Enable signal
Screw terminals for power supply	2x M6 bolts, available length of thread 10 mm
Communication	CAN 2.0, Baudrate 250 kbit/s, 500 kbit/s, 1 Mbit/s
Over and under voltage protection	Integrated, up to 36 V
Reverse polarity protection	Integrated, up to -32 V
Maximum battery current	120 A
Quiescent current (Enable "Low")	1 < mA
Output shaft	φ12h8 with groove for feather key

► Operating conditions

Operating Temp. Range	-40°C / +85°C
Vibration level	5g RMS, further validations upon request
Protection class	Up to IP 6K9K after integration to the customer's housing
ROHS (Lead Free)	Compliant